

or simply lie back and enjoy spending time relaxing!



a Manchester Hotel for Leisure or Business

BEST WESTERN WILLOW BANK HOTEL



FEATHERS HOTEL GROUP



WILLOW BANK

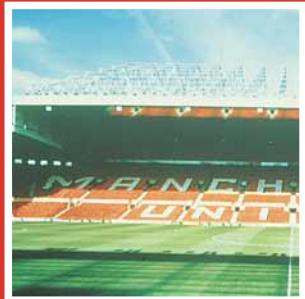
In the heart of the city



Manchester, the capital of the North, has something for everyone; whether it is world class shopping at the Trafford Centre or in the heart of the City, its International Airport, its wide selection of conference and exhibition centres or perhaps great football teams! If you have already experienced the thriving metropolis of Greater Manchester then perhaps you have already begun to understand why it is now regarded as one of the best cities in the UK today.

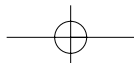
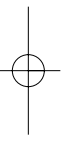
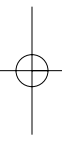
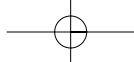


Whether you are visiting this great city for business or for pleasure, it has so much to offer; with a great selection of bars and restaurants, casinos, museums, galleries and the magnificent Lowry Centre - all the attractions of a genuine 24-hour city.



The Best Western Willow Bank Hotel is perfectly located in the centre of all the important amenities including the City Centre, the Universities, the main conference arenas, entertainment facilities and shopping centres, yet still only five minutes away from Manchester International Airport. With substantial, easy-access, car parking, the hotel offers the best of both worlds, being so close to everything means not having to deal with the hassles of main city centre traffic and car parking.

So if you are here for a conference in the City Centre, flying out of Manchester Airport, have tickets to watch Manchester United play, visiting the Universities, or simply looking forward to a weekend away shopping, eating, drinking and relaxing, you will find all the answers at the Best Western Willow Bank Hotel.







WELCOME

to The Best Western Willow Bank Hotel

From the moment of your arrival, the hotel atmosphere is designed to relax and unwind travellers from the stresses and strains of their day. Enter the magnificent Skyway Lounge overlooking the tree-lined Wilmslow Road, and sink into the beautiful leather armchairs, and you will find the warmest, friendliest welcome from our highly trained and hand-picked team.

Relax with some homemade biscuits and freshly brewed coffee, amidst the Roman

statues that depict another part of Manchester's proud history - one begins to unwind in this haven of affordable luxury and tranquillity.

Once refreshed and recharged, you can then begin the pleasurable challenge of choosing from the vast range of attractions that Manchester has to offer its guests - all within easy reach of your hotel.





RELAXATION

Comfort & Style

With 120 bedrooms at the hotel we are able to offer up a wide range of rooms to match both your tastes and your budget. The majority of rooms have been recently upgraded to an executive standard with highly attractive design, new bathrooms, CD players, digital radios, and flat screen televisions.

Whether you are visiting Manchester on business or leisure you will not be disappointed either by price or quality when staying at the Best Western Willow Bank, in the heart of Manchester.









SOPHISTICATION

the detail makes it special

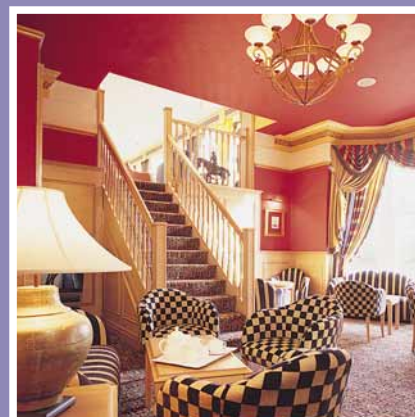
As a result of the recent multi-million pound refurbishment, the Best Western Willow Bank Hotel now has a number of luxury public areas designed to relax and unwind you at the end of the day.

Picture yourself relaxing with a book and a glass of wine in our beautiful, softly furnished Lowry Lounge.

Alternatively, enjoy the history of the Enigma Bar, with its hall-of-fame featuring some of Manchester's greats - Mr Rolls and Mr Royce, along with Emmeline Pankhurst and an eclectic mix of modern heroes - that hint at the

diversity of people who have either lived or worked in Manchester. These great pictures provide a glimpse into the rich ongoing history of Manchester.

A wide selection of bar snacks, traditional beers and quality wines along with a comprehensive light refreshment menu are available throughout the day and evening, whether you choose the ambience of the Skyway Lounge, Lowry Lounge or Enigma Bar.





FINE CUISINE

a magical experience

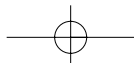
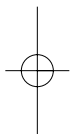
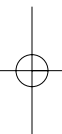
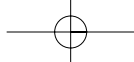
The Roman-themed Coliseum restaurant provides an exquisite venue for dining. Its Roman plinths, great paintings, magnificent statues and even helmets and shields set the stage for the efficient but friendly service. An exciting and varied menu with genuinely sensible prices makes this a perfect place to relax and unwind.

drink when the Best Western Willow Bank offers such quality and diversity, without the expensive prices normally associated with City Centre Hotel dining.

This award winning restaurant is popular with everyone and is well worth experiencing when next you pass through Manchester.

You will begin to question if there is any point in heading out at night to dine and







MEETINGS

a pleasure not a chore



Designed to be the ideal venue for meetings and conferences in the North West, the hotel has a comprehensive menu of business facilities to offer.

The Dalton Board Room, with its luxury high backed armchairs, is ideal for up to 15 executives. Inspirational portraits of the great and the good of Manchester provide the right environment for that small seminar or board meeting.



The Rylands Library suite - researched and refurbished with the assistance of the Rylands Library Manchester - is a perfect setting for meetings for up to 50 delegates. It is fully air conditioned and provides a built in conference and display board, top class lighting and furnishings.

The Coliseum Conference Suite, accommodating up to 200 delegates, with a high-tech lighting and sound system, fully air-conditioned and superb quality of service, completes the range and choice of rooms available.

The Royce Suite, a fully air conditioned, recently created meeting room on the first floor simply adds to the range and style of meetings rooms at this quality led hotel.

Why not visit the hotel to see for yourself the wonderful facilities. You will be surprised at the highly competitive prices available for your next business meeting or seminar!





SPECIAL EVENTS

weddings & Parties

No expense should, or has been spared as far as Weddings and Parties are concerned! The Coliseum, Rylands and Dalton Suites are all licensed for Civil Marriage Ceremonies.

The Coliseum Function Suite - fully air-conditioned with a night club style lighting and sound system, a superb function bar and the 'spill-out' facilities of the gloriously themed Enigma Bar and Lowry Lounge - make this the perfect environment if you are planning a Wedding, Christmas Party, Retirement Event, Anniversary or any other social gathering.

The Rylands and Dalton Suites can provide a more intimate setting, with our unique 'Posh 'n' Becks' carved armchairs for the Bride and Groom, a 2am liquor licence, preferential accommodation rates for function users; it just gets better and better.

Finally, our top creative Chefs and Manager will ensure that you have great food from around the world to suit the style and preferences of you and your guests. Most importantly, this will be at highly competitive, value for money prices.

If you are organising an event why not give us a call, pop in, have a coffee and discuss with our team how we can be of service to you and help give you the event of a lifetime.





Directions...



FROM THE SOUTH:

From the M6, join the M56 towards Manchester and Manchester Airport. Follow the M56 to the very end, this becomes the A5103. Continue straight through crossroads which intersect the A5145, through 2 sets of traffic

lights and then through 2 pedestrian crossing traffic lights.

At the next set of traffic lights turn right, sign posted Withington. Continue along this road (Mauldeth Road West) and through the first set of traffic lights. At the second set turn left - this is now Wilmslow Road. The Hotel is just a few hundred yards on the left hand side, just past the Lansdowne Hotel, and just before McDonalds.

FROM THE NORTH:

From the M62, West Yorkshire or M61 Preston, join the M60 signposted Manchester Airport. Turn off at junction 5. Keep left and immediately exit left to Northenden. Turn left at the traffic lights with the Post House on your left. Continue along this road for about 2 miles. We are on the left hand side about 500 yards after Withington, just before McDonalds.

FROM THE CITY CENTRE:

Follow Oxford Road from the City Centre signposted Universities. Continue along for about 2 miles through Rusholme. Oxford Road turns into Wilmslow Road. You will pass a Sainsbury's Store on your left and a McDonalds on your right, the hotel is on the right.

HOTELS IN THE FEATHERS GROUP

BW ALICIA HOTEL

3 Aigburth Drive,
Liverpool L17 3AA
Tel: 0151 727 4411
Fax: 0151 727 6752
alicia@bestwestern.co.uk

BW FIR GROVE HOTEL

Knutsford Old Road,
Warrington WA4 2LD
Tel: 01925 267 471
Fax: 01925 601 092
firgrove@bestwestern.co.uk

BW WESTMINSTER HOTEL

City Road, Chester CH1 3AF
Tel: 01244 317341
Fax: 01244 325369
westminsterhotel@bestwestern.co.uk

BW THE QUEEN HOTEL

City Road, Chester CH1 3AH
Tel: 01244 305 000
Fax: 01244 318 483
queenhotel@feathers.uk.com

FEATHERS HOTEL

115/125 Mount Pleasant
Liverpool L3 5TF
Tel: 0151 709 9655
Fax: 0151 709 3838
feathershotel@feathers.uk.com

BW LEYLAND HOTEL

Leyland Way, Leyland, Preston
Lancashire PR25 4JX
Tel: 01772 422 922
Fax: 01772 622 282
leyland@bestwestern.co.uk

BW LLYNDIR HALL HOTEL & SPA

Llyndir Lane, Rossett,
Chester LL12 0AY
Tel: 01244 571 648
Fax: 01244 571 258
llyndirhallhotel@bestwestern.co.uk

FEATHERS CATERING, EVENTS & PRODUCTIONS

NATIONAL HEAD OFFICE ADDRESS:

Cater House, 113 Mount Pleasant, Liverpool L3 5TF
Tel: 0151 709 2020 Fax: 0151 708 8212 info@feathers.uk.com

www.feathers.uk.com



BEST WESTERN WILLOW BANK HOTEL

340 Wilmslow Road, Manchester M14 6AF

PHONE: 0161 224 0461 FAX: 0161 257 2561 willowbank@bestwestern.co.uk

